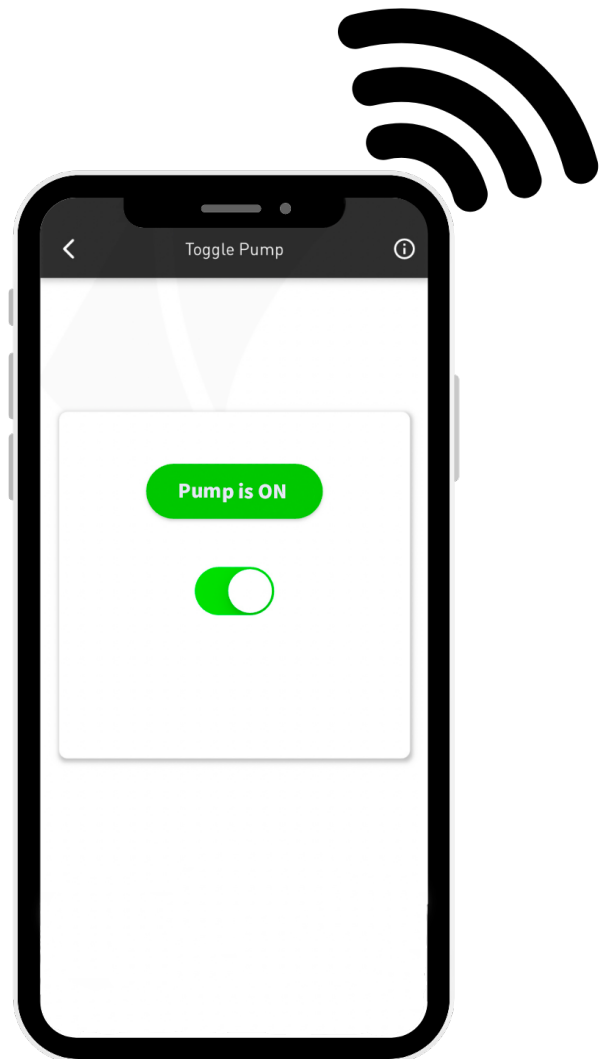




Liquimech Connect

Mobile App

User Manual
V1.0.2



Local Access Pump

Table of Contents

1.	Introduction	3
2.	Getting Started	3
3.	Pump Control	6
4.	Notifications.....	11
5.	Managing Access	12
6.	Logging Out	16

1. Introduction

1.1 Overview

The Liquimech Connect - Local Access Pump is designed to provide seamless control of your pump system.

- ❑ This app enables you to turn your pump on and off with ease.
- ❑ Allows you to manage user access.
- ❑ The software provides a dependable and effective solution to monitor and manage your pump operations remotely with its user-friendly interface.

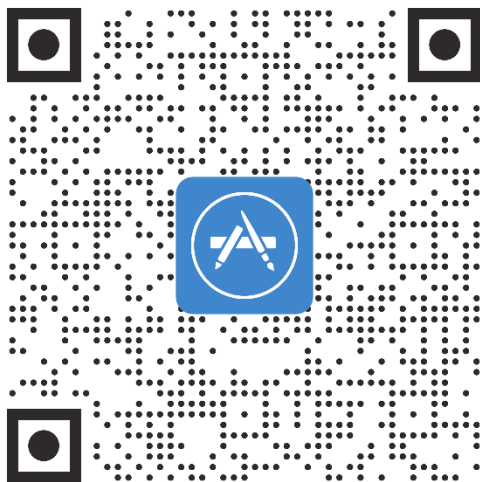
1.2 Purpose

This user manual offers a step-by-step guide to downloading and operating the Liquimech Connect - Local Access Pump.

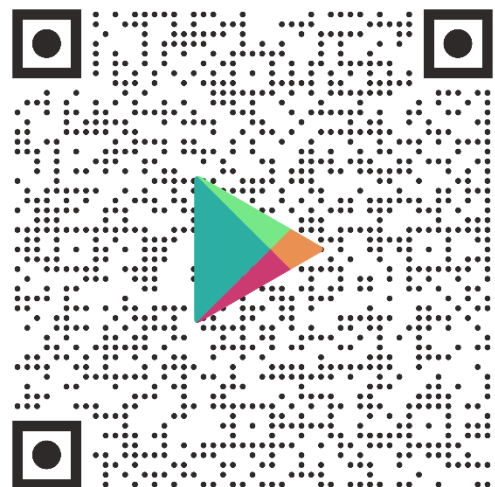
2. Getting Started

2.1 Downloading

Download the **Liquimech Connect** Mobile App from the App Store (iOS) or Google Play Store (Android).



App Store



Google Play Store

2.2 Sign-Up

- ❑ Launch the app and sign up.
- ❑ Follow the on-screen instructions to create a new user account.

2.3 User Login

- ❑ Launch the app and enter your registered username and password.
- ❑ Tap "Login" to access the app.

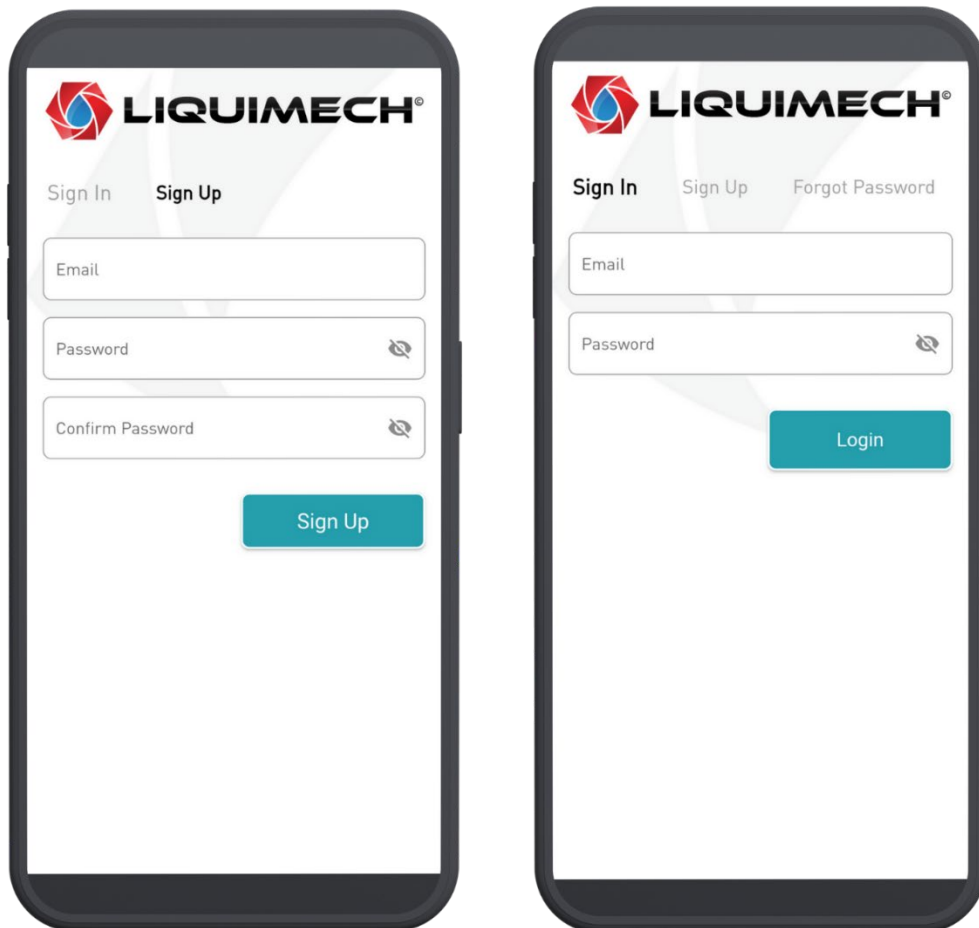


Figure 1: Sign-up and Sign-in screen.

2.4 Forgot Password

- ❑ If you forget or want to reset your password, tap "Forgot Password" on the login screen.
- ❑ Enter your registered email address and follow the instructions to reset your password.

2.5 Navigating the Home Screen

- ❑ After creating an account and logging in, the user will land on the home page.
- ❑ My Devices: Shows the nearby devices assigned to the user's account.

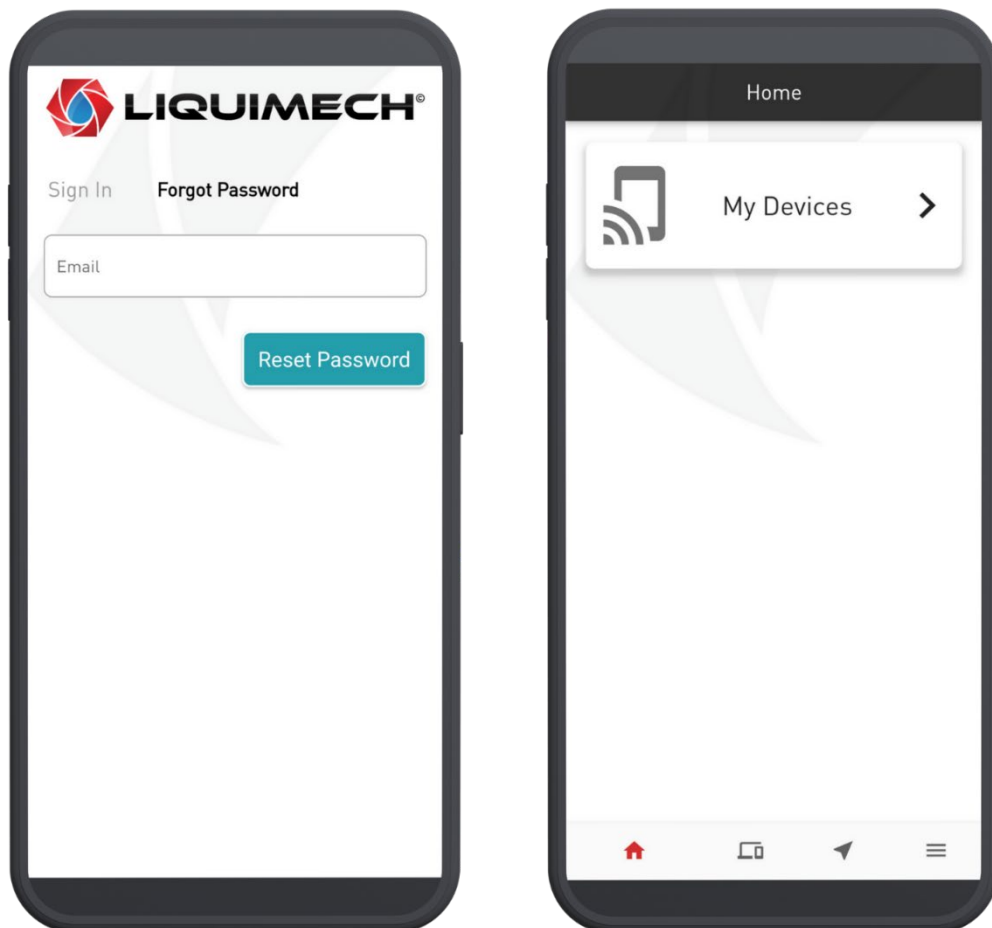


Figure 2: Forgot Password and Home screen.

3. Pump Control

3.1. Control Panel

- Locate the key on the control panel.
- Set to Auto Mode by rotating the key to position no. 3.

Note: This setting will enable the pump to connect to the Liquimech Connect Mobile App.



Figure 3: Control Panel.

3.2. Pump selection

- ❑ Enable Bluetooth and Wi-Fi on your device (internet access is not required).
- ❑ Open the app and navigate to the My Devices section.
- ❑ Tap the Scan button to search for nearby pumps.

Note: If Bluetooth and Wi-Fi are disabled, you will be prompted to enable them before scanning.

- ❑ Once the scanning process is complete, select a pump (device) from the list.

Note: A notification will appear stating “Liquimech wants to join Wi-Fi Network [pump name]”.

- ❑ To proceed, tap Join.

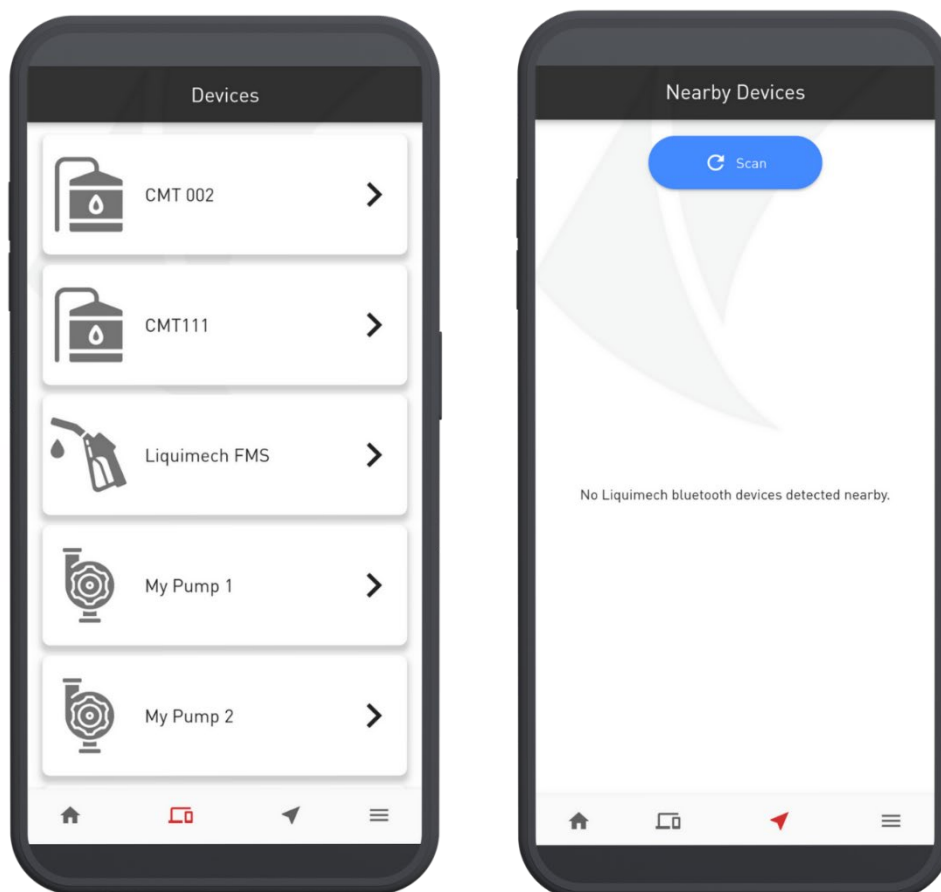


Figure 4: User's Devices and Scan Nearby Devices

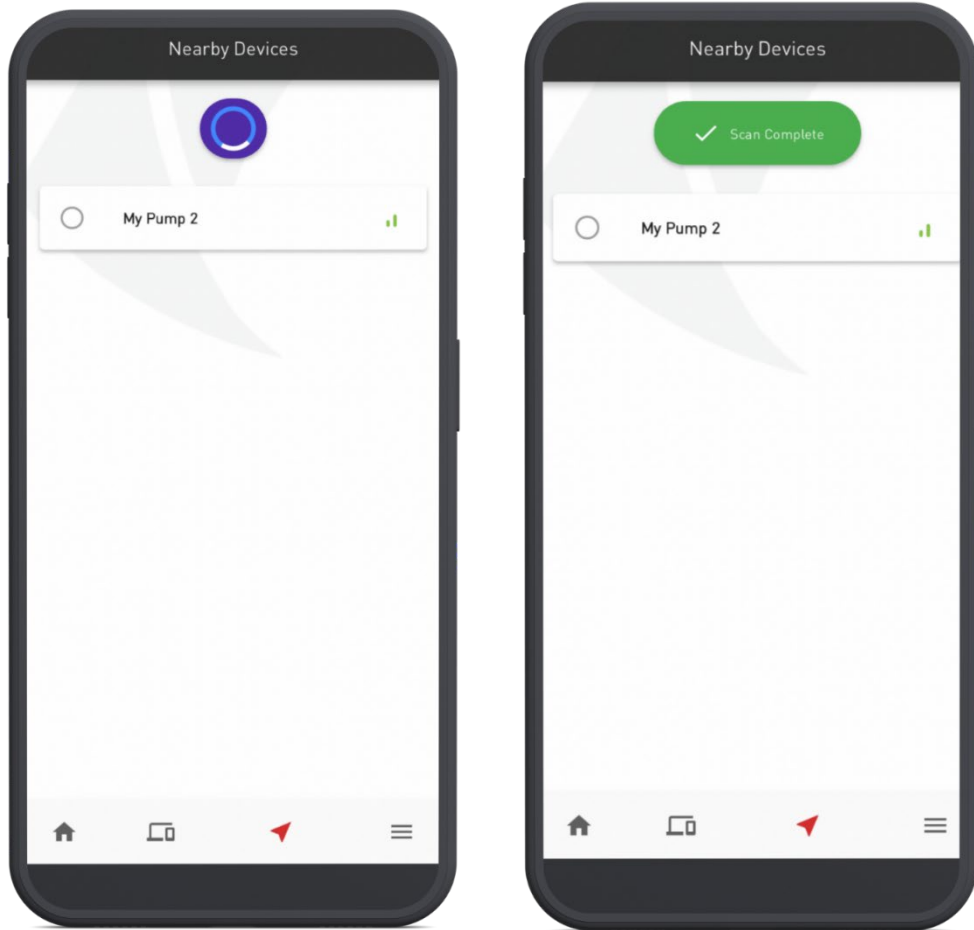


Figure 5: Scanning Nearby Devices and Scan Completed

3.3 Turning the Pump On/Off

- ❑ Tap the switch to turn the pump on or off.
- ❑ Wait for the app to communicate with the pump.

Note: The app will send a signal to the pump to turn it on or off.

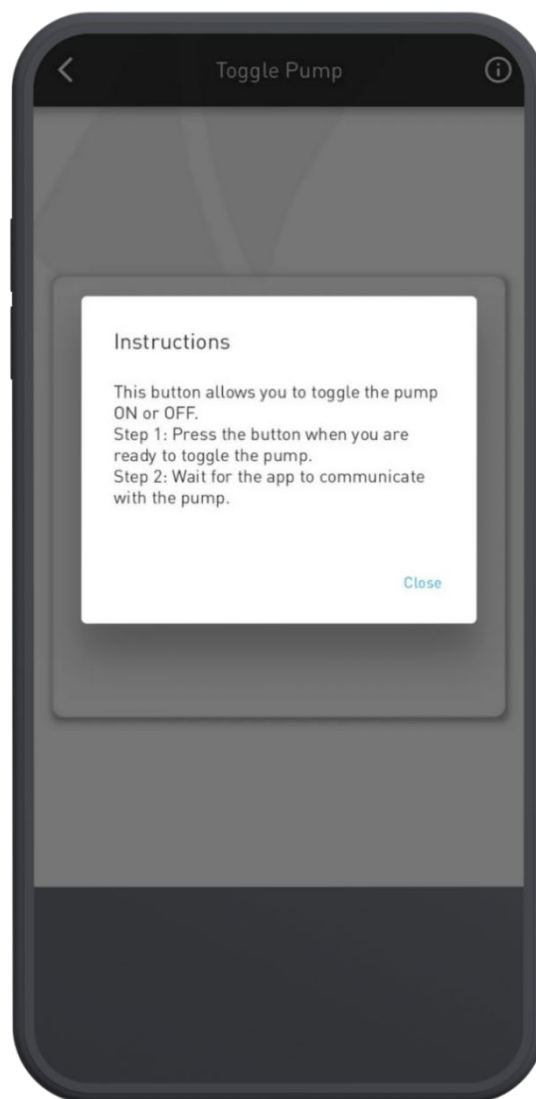


Figure 6: Toggle Pump Instructions screen.

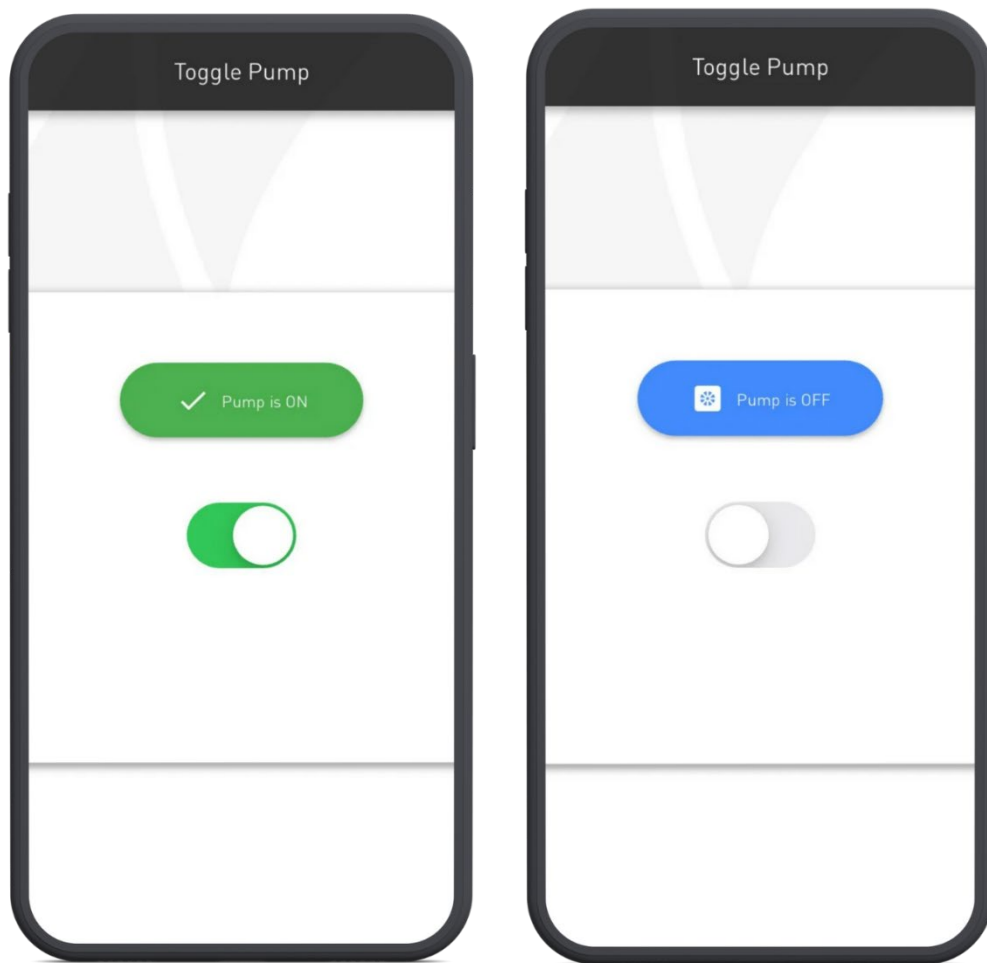
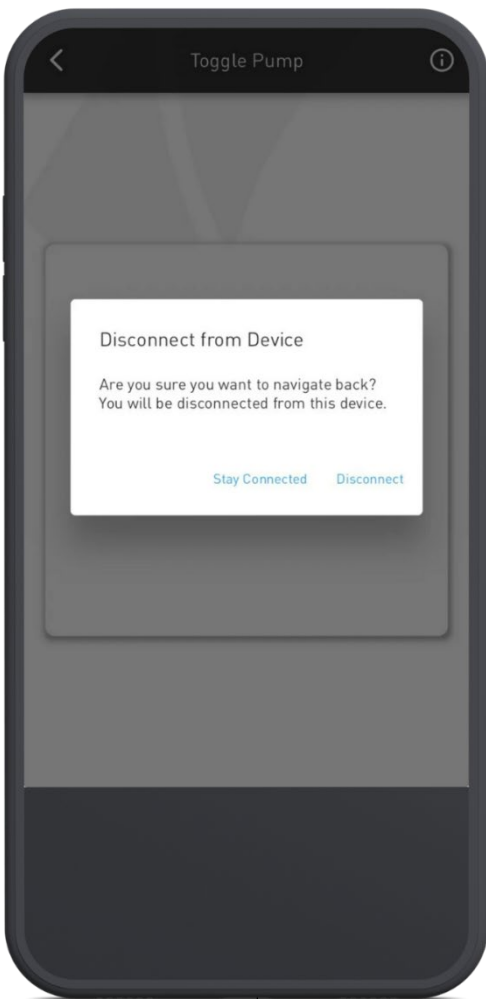


Figure 7: Pump On and Off.

4. Notifications



When you try to navigate back, you will be disconnected from the device.



The user group icon in the upper right will direct you to Manage Users.

A notification will appear if the pump or device is not nearby. Ensure your device is within range and retry the connection.

5. Managing Access

5.1 Adding New Users

- ❑ Go to Manage Users.
- ❑ Click the Edit (pencil) icon in the upper left to enter edit mode.
- ❑ Confirm the edit mode.

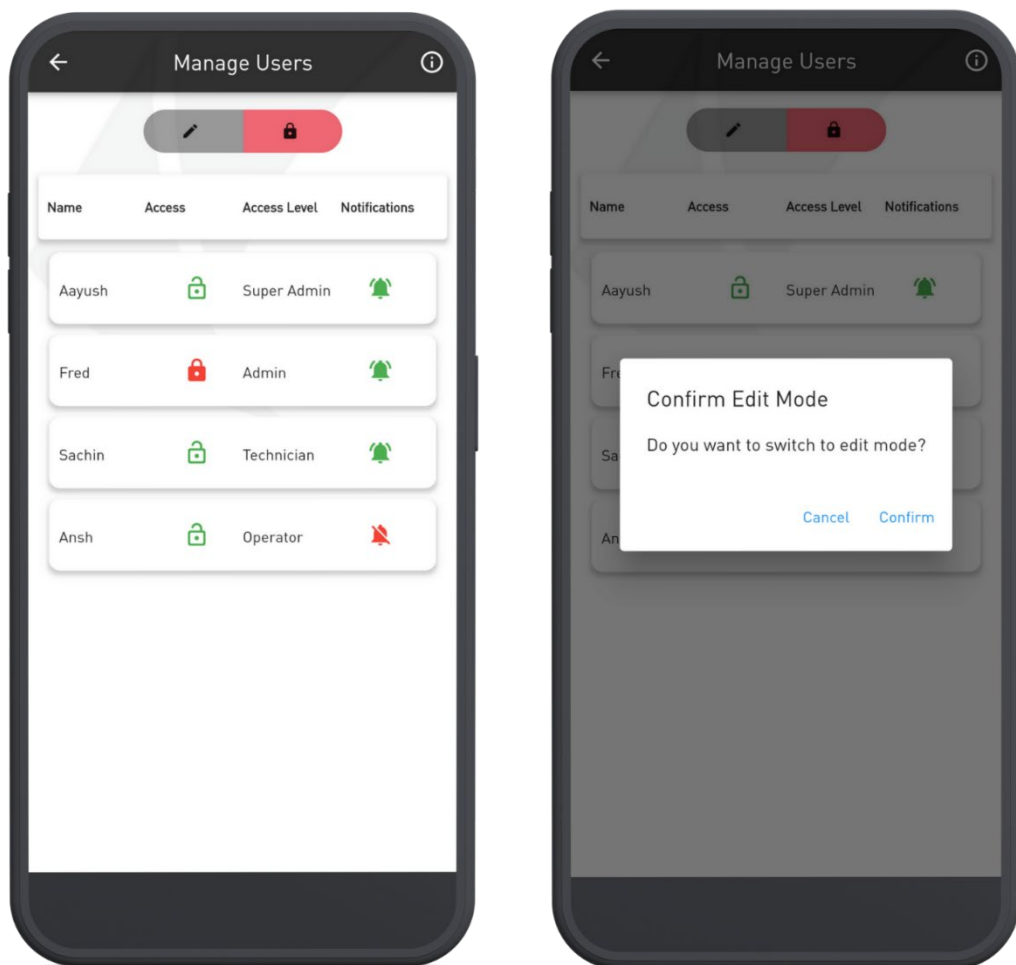


Figure 8: Manage Users screen and Edit Mode Confirmation

- ❑ Click the Plus icon button below to add a new user.
- ❑ Enter the user's information and specify their access level.

Super Admin	Full system access with user management capabilities.
Admin	Can change system settings and view all user activities.
Technician	Limited setting changes are allowed; you can view the system status.
Operator	Basic day-to-day access; can only view system status

- ❑ Click “Apply Changes” to save the new user's information.
- ❑ The new user will receive a verification email with instructions on how to set a password.

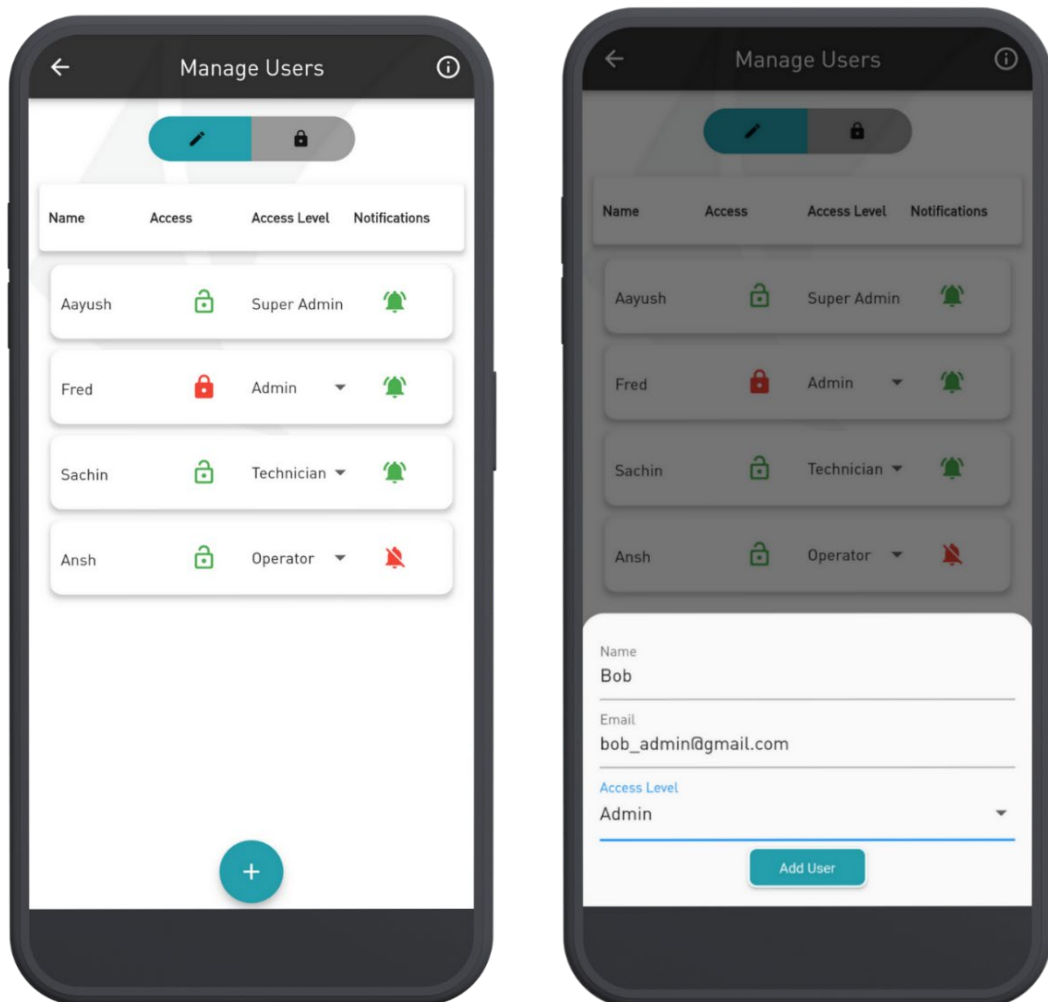


Figure 9: Manage User screen with Add Icon and filled with new user information.

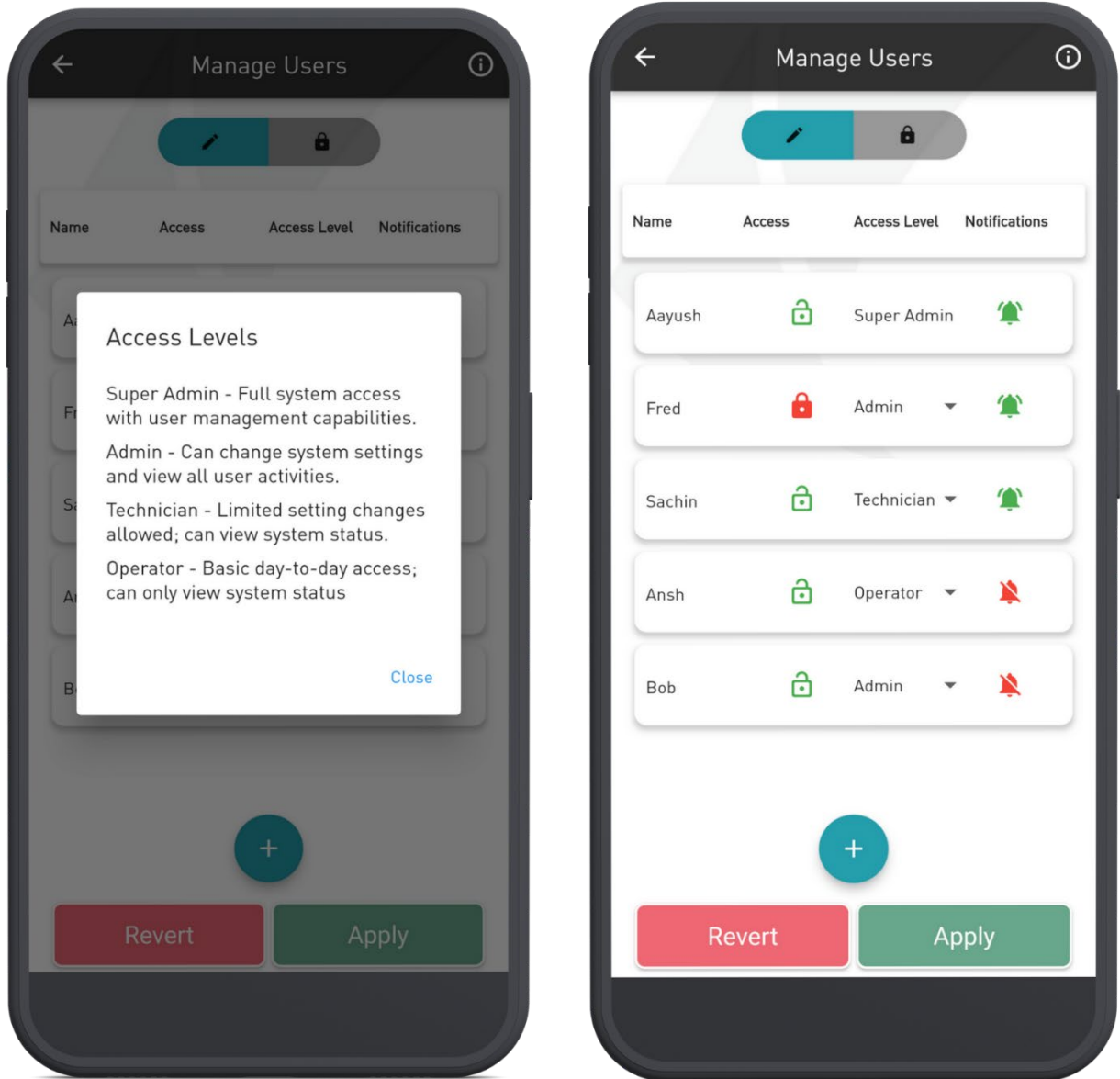


Figure 10: Manage User screens, showing Access Levels and Apply button

Hello, Bob

You have been given access to a device. Please visit the following link to create your password:

Please download the Liquimech App to get started with your new device. If you did not ask to sign up, you can ignore this email.

Thanks,
Liquimech App Team

Figure 11: Verification email

Reset your password

for

New password

Figure 12: Reset or create a password request

6. Logging Out

- ❑ To log out, navigate to the settings page.
- ❑ select “Logout”.

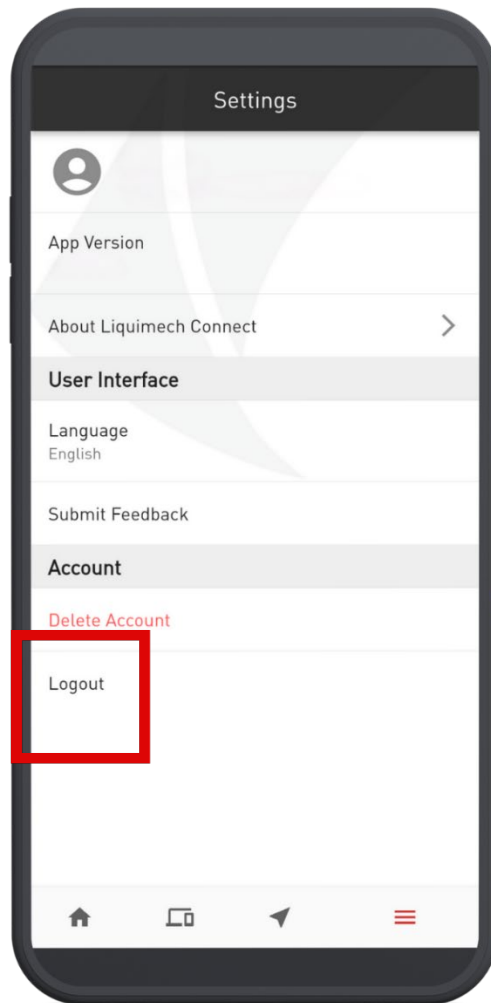


Figure 13: Log out screen



**you define,
we design**
